

Ellex: support travel expenses

Three years after Selective Laser Trabeculoplasty SLT versus medical therapy

2007

Düsseldorf

H. Ferdinand A. Duijm



Ophthalmology
Isala Clinics Zwolle The Netherlands

Selective Laser Trabeculoplasty

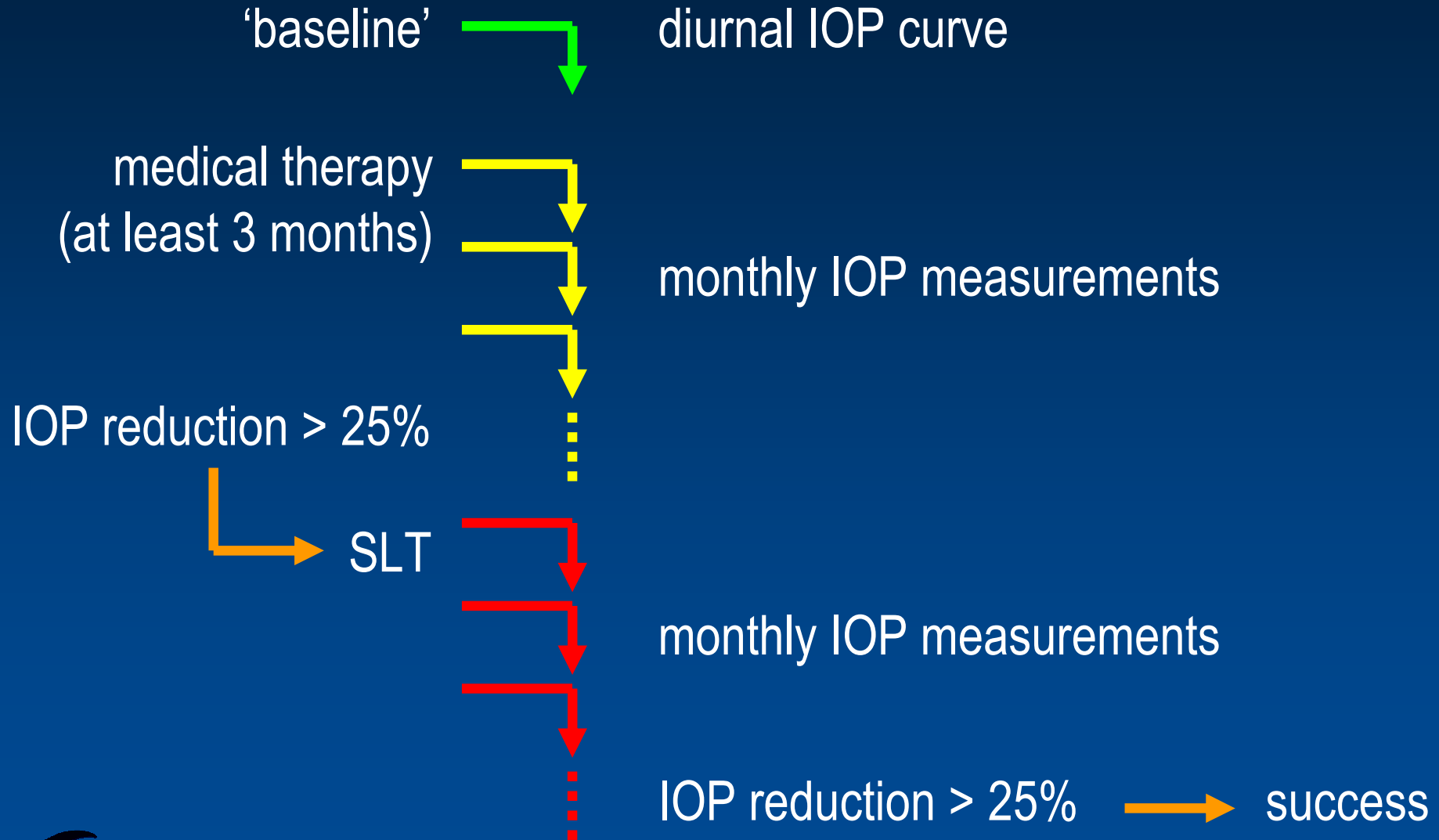
**

- glaucoma treatment: IOP reduction
- first line: topical medication
- alternatives for medical treatment?
- SLT as a first line modality
- Purpose: comparison SLT versus medical therapy
comparable effectivity?



Study setup

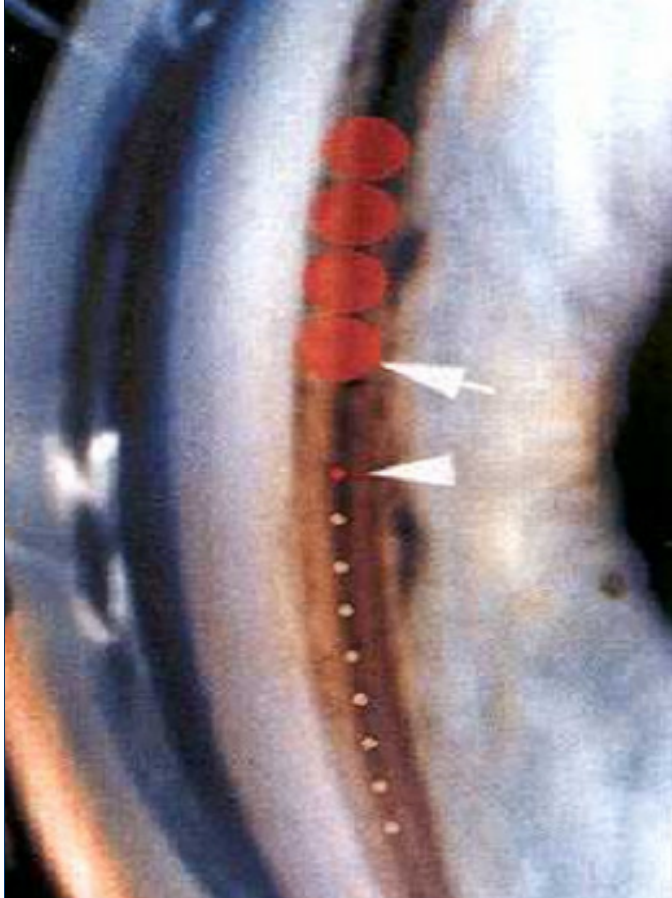
**



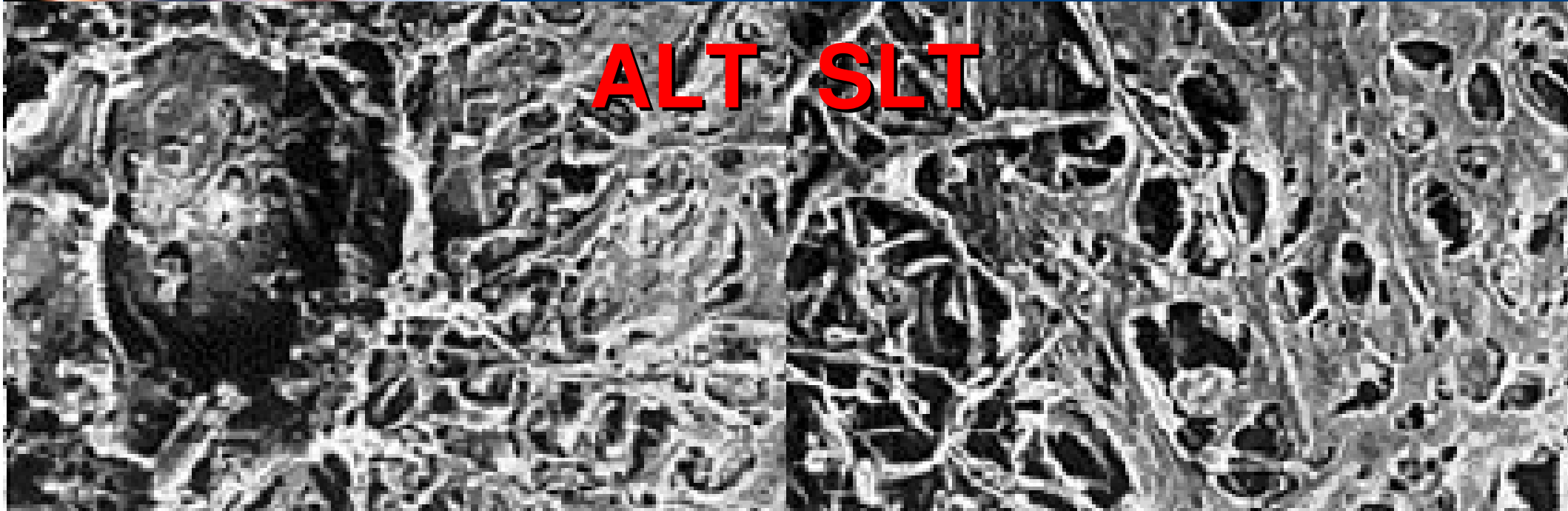
Patients & methods - Selective laser trabeculoplasty

- Q-switched frequency doubled (523nm) Nd:YAG laser
- inferior 180° 50 shots
- postlaser topical corticosteroids



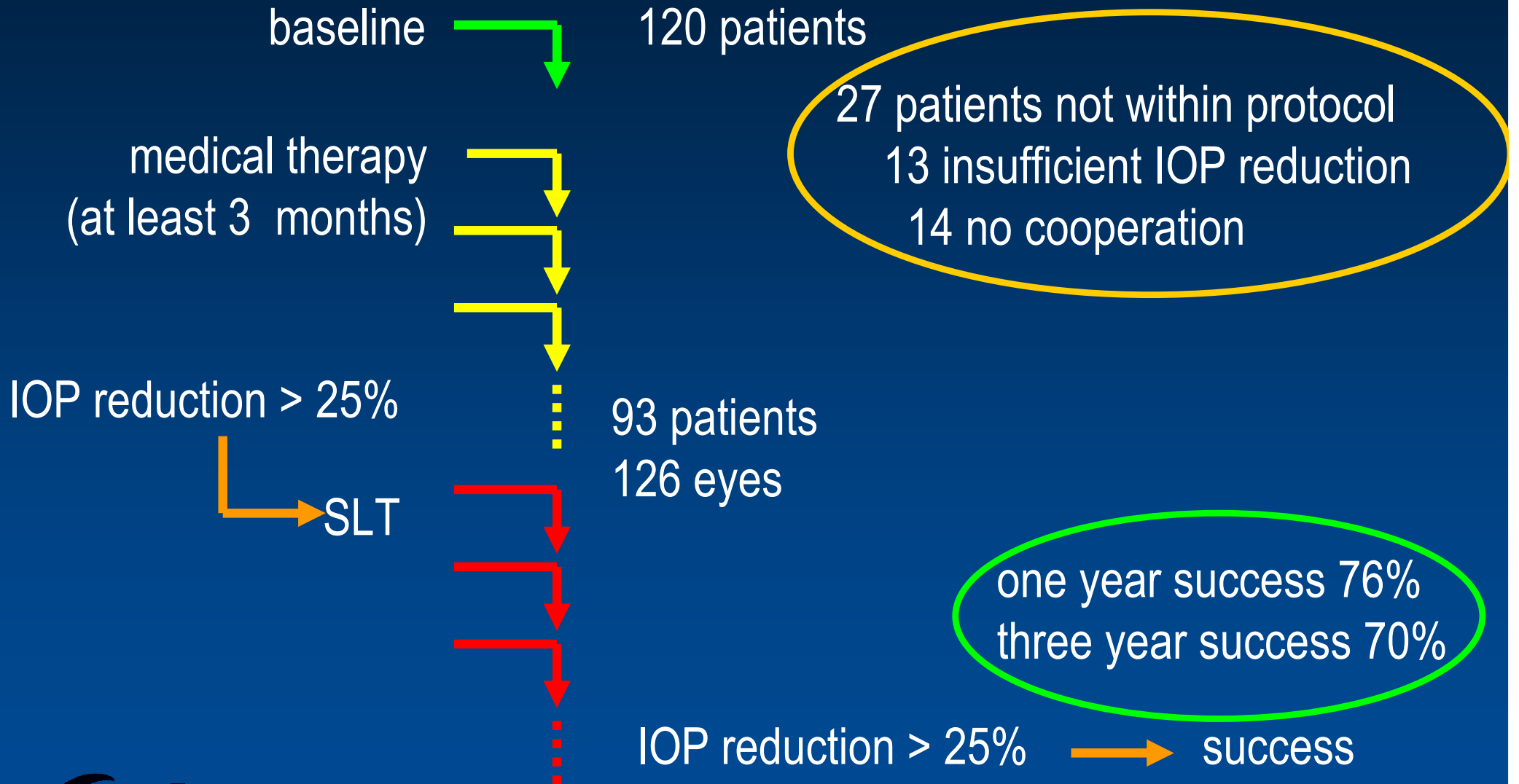


	Argon LTP	Selective LTP	**
spot size	50 μm	400 μm	
energy	0,5-1 W	0,0008 - 0,0015 J	
pulse duration	0,01 s	0,000 000 003 s	
fluence	60 $\text{J}\cdot\text{cm}^{-2}$	0,6 $\text{J}\cdot\text{cm}^{-2}$	

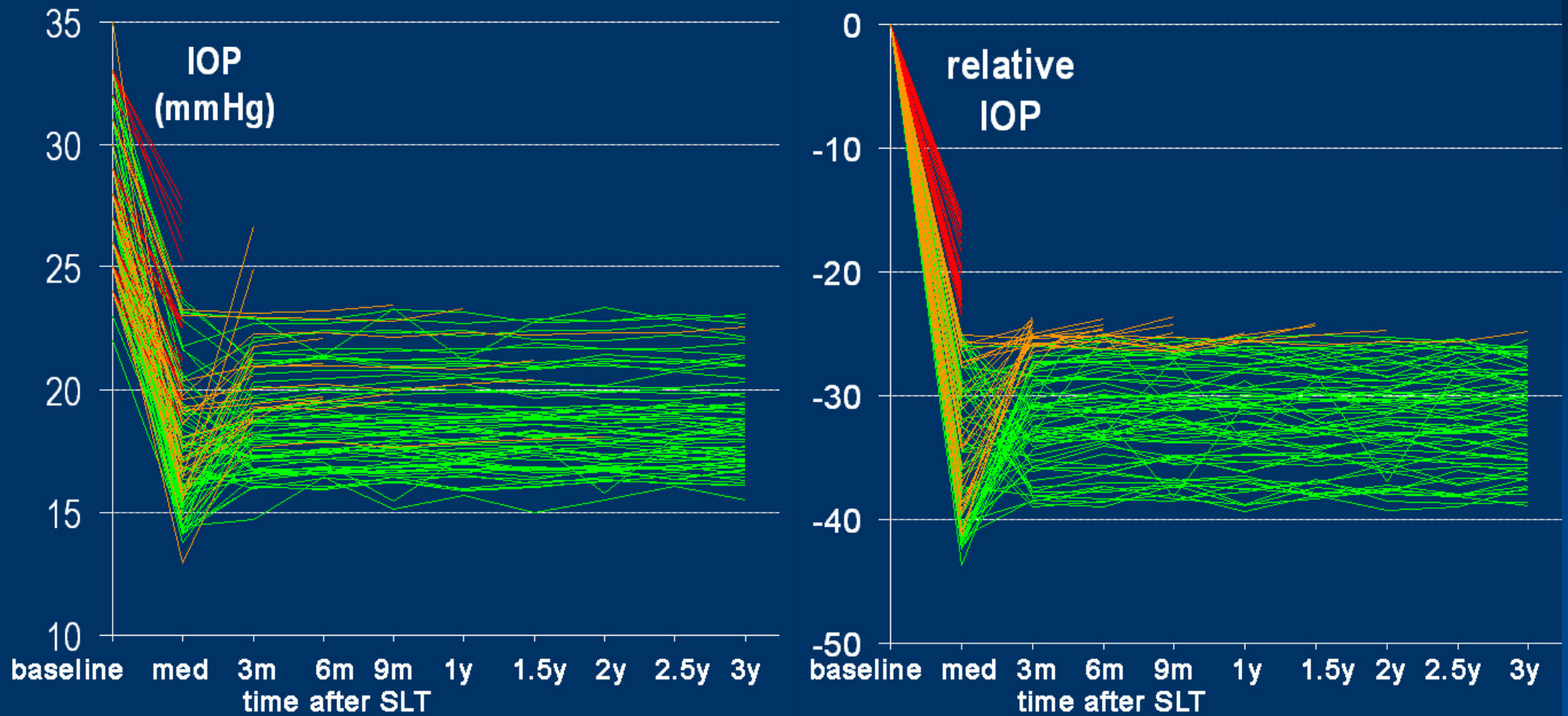


Patients & methods - numbers

**

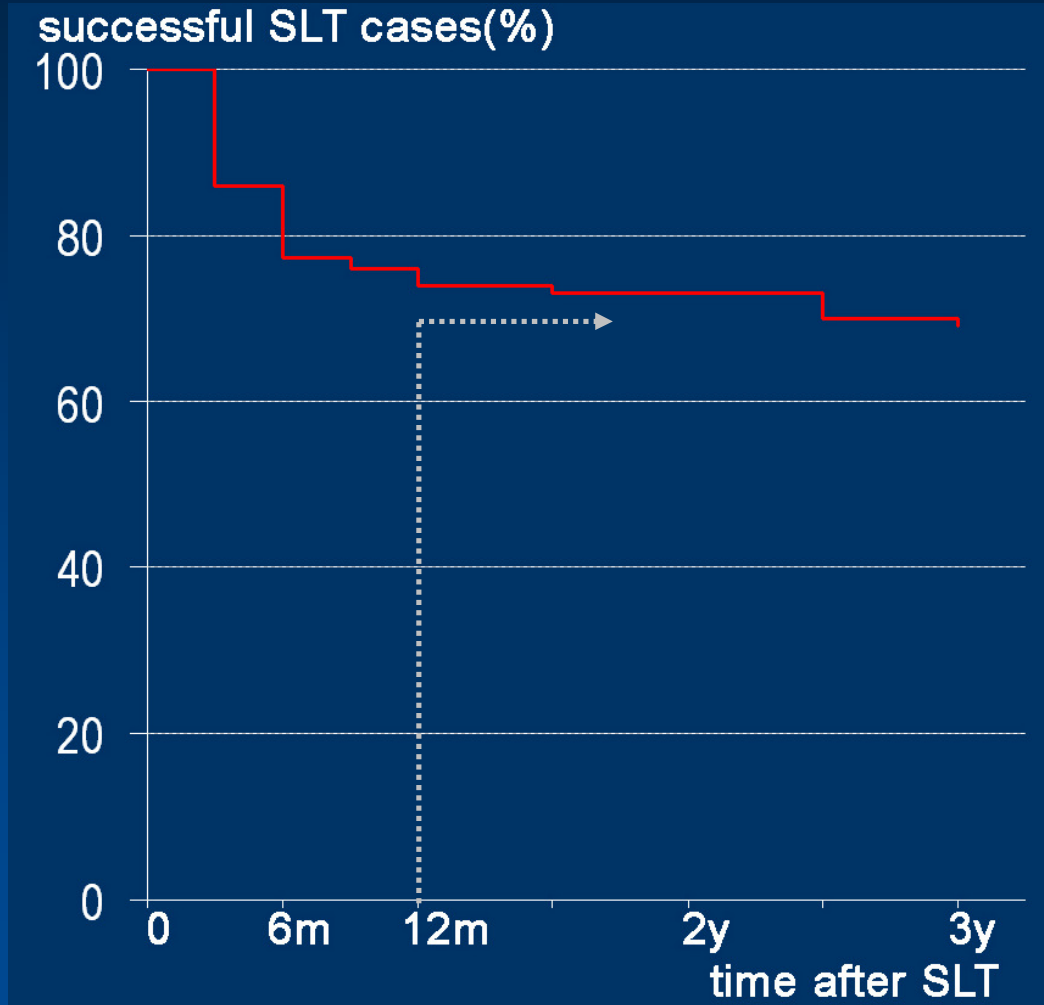


Results - IOP



Results - IOP

	mean IOP	failure rate
baseline	27.7±2.8	
med therapy	18.3±3.8	
SLT 3 mnd	19.1±2.1	14%
6 mnd	18.9±2.0	20%
9 mnd	18.7±1.9	23%
12 mnd	18.8±2.1	24%
2 yrs	18.3±2.0	27%
3 yrs	18.4±2.3	30%



SLT as first line treatment modality

- no 'non-compliance'
- mild side-effects
- retreatment?
- long term effectivity?



Summarizing

- SLT
after one year: 76% success
after three years: 70% success
- IOP reduction after a successful
SLT comparable to
medical therapy
- alternative 1st line treatment



Thank you
Grazias
Grazie
Agradece
Takk
спасибо
Tack
Vielen Dank
Merci
Obrigado
Hartelijke dank



